

Weekly Home Learning



Year group	3	Week number	12	Date	29/06/2020
------------	---	-------------	----	------	------------

Hey Year 3 😊 I hope you're ok and you managed to think about and try some healthy options. I hope you remembered what we have we learnt and had a great time revising! As always, I'd love to see what work you have done this week so please email some of your fabulous work over to year3@st-philips.sandwell.sch.uk
Praying to see you all soon...
Keep safe, keep working, keep smiling
Miss Anslow




Hello Year 3!
I hope you are enjoying your home learning! Please send your spelling and timetables results over to the Year 3 e-mail so can have a look.

Hope to see you all very soon.
Mrs Stevens

Reading	Task	Guidance
<p>https://www.oxfordowl.co.uk/for-home/find-a-book/library-page/?view=image&query=&type=book&age_group=Age+7-9&level=&level_select=&book_type=&series=#</p> <p>Please use the link above and create a free account. This will give you access to lots of free, age appropriate ebooks that you can read at home.</p> <p>Aim to read for 15 minutes each day! When you have finished a book, write a book review. What did you like best about it? Did anything make you laugh or cry? Were there any confusing parts or parts you didn't like so much? What would you give the book out of 5 stars? Who do you think would really like to read the book?</p> <p>Send an email to year3@st-philips.sandwell.sch.uk and let us know what books you have been reading and what you thought of them.</p>		

English	<p><i>"Welcome to the World of Night, a magical place where anything is possible!"</i></p> <p>This week focuses on <i>The Night Zookeeper...</i></p>
---------	---

Focus	Task	Guidance
	Lesson title	Lesson link and guidance to support
Monday	<ul style="list-style-type: none"> • Watch video 1 • Writing = Create a character in the zoo or a zookeeper 	https://www.literacyshed.com/nightzoo.html
Tuesday	<ul style="list-style-type: none"> • Watch video 2 • Writing = Describe the setting in which your character mainly stays 	https://www.literacyshed.com/nightzoo.html
Wednesday	<ul style="list-style-type: none"> • Watch video 3 • Writing = write about a problem your character is having 	https://www.literacyshed.com/nightzoo.html
Thursday	<ul style="list-style-type: none"> • Watch video 4 • Writing = write about how your character solves his/her problem 	https://www.literacyshed.com/nightzoo.html
Friday	<ul style="list-style-type: none"> • Writing = write your beginning, middle and end of your story about your character in the zoo/the zookeeper 	
Spellings		

Maths	<p>We are revising work on angles this week. Remember the definitions that we learnt about angles.</p> <p>Small angle = acute (<i>aww cute</i>) </p> <p>L shaped angle = right angle </p> <p>Large/big open angle = obtuse angle </p>
-------	---

Times tables	
--------------	--

Focus	Task	Guidance
	Lesson title	Lesson link and guidance to support

Monday	Lesson 1 – Right Angles	https://whiterosemaths.com/homelearning/year-3/
Tuesday	Lesson 2 – Comparing Angles	https://whiterosemaths.com/homelearning/year-3/
Wednesday	Lesson 3 – Horizontal and Vertical	https://whiterosemaths.com/homelearning/year-3/
Thursday	Lesson 4 – Parallel and Perpendicular	https://whiterosemaths.com/homelearning/year-3/
Friday	Friday Maths Challenge	https://whiterosemaths.com/homelearning/year-3/
R.E.	Tasks	Guidance

I know when and where I can pray.

The church is not the only place that we can pray. Jesus told his disciples to pray constantly and so everywhere can be a place of prayer. Think about different places that can help you think of God, e.g. something in creation, some object or religious artefact or picture, focal point in class, somewhere in your home. Draw a picture of your special prayer place and write about what makes it **YOUR special place for prayer**.

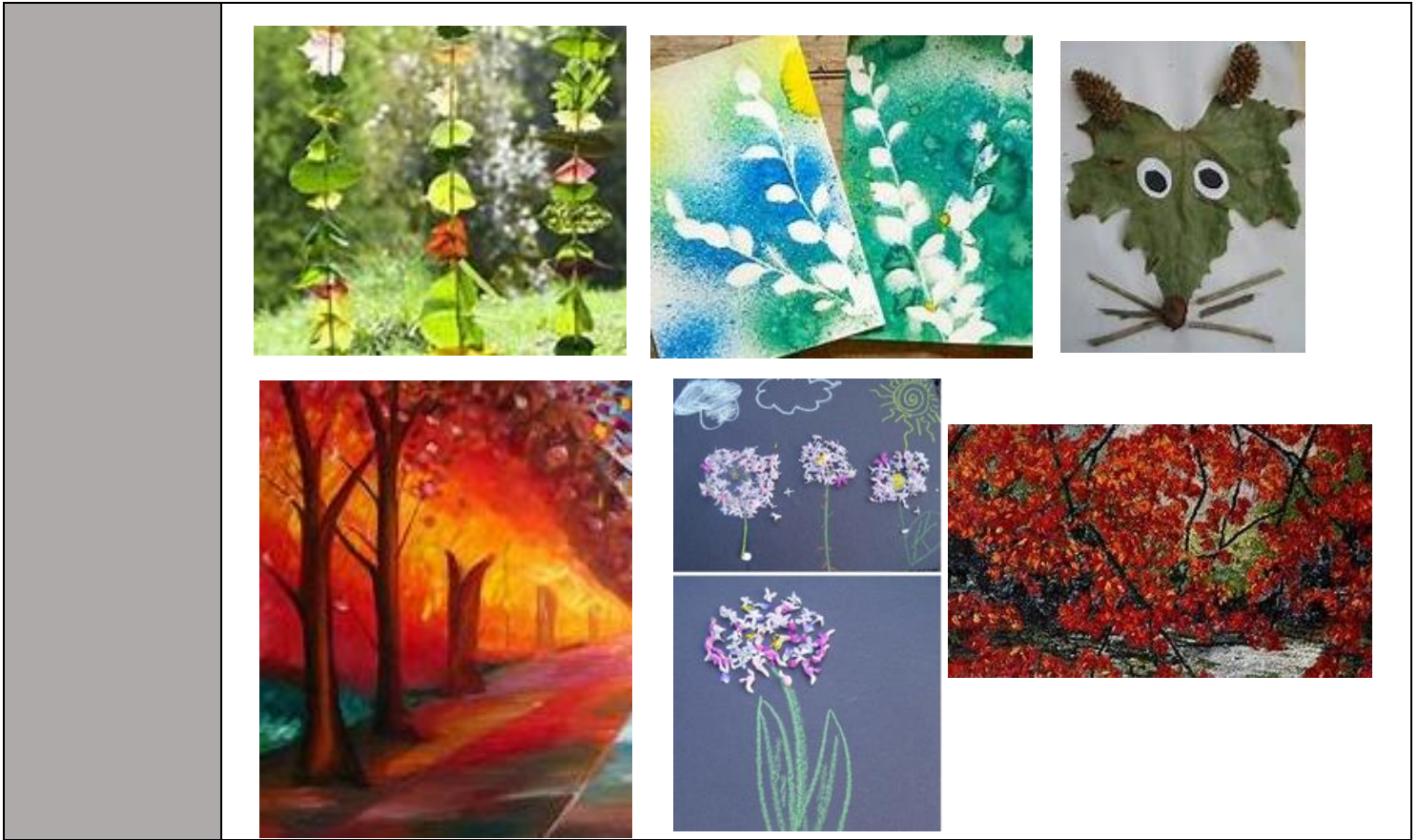
Set up a prayer focus in YOUR special prayer place. Use some cloth/material, a candle (*with an adult*) if you have one and any prayers that you have written or special pictures. You can say a prayer here or sing a hymn.

Project work

Children’s Art Week – UK 29 June – 3 July

Children’s Art Week is a UK-wide programme run by Engage, the National Association for Gallery Education. In 2020, Children’s Art Week will take place online, at home and in schools across June and July. Our 2020 theme is... : ***The Natural World***





Other activities:	Activity	Guidance/Link
	Collective Worship	E.g. One Life Music link
	P.E with Joe Wicks	Youtube channel